



TS RIGID FRAME DOCK SHELTER SPECIFICATIONS

Design Highlights

- Heavy-duty frame available in roll formed galvanized steel (includes five year warranty) or 1 1/4" square steel.
- Frames covered with translucent white fiberglass to transmit natural light into the loading area.
- Raked header permits weather drainage (flat header is used when shelter is protected by a hood or canopy).
- Foam weather strip provides a seal on the top, front edge of the shelter frame, under aluminum trim angle.
- Fiberglass stays add stiffness to shelter face curtains.
- Wind straps on head curtain keep the head curtain from being blown out of position when the shelter is not in use.
- Four overlapping wear pleats per side absorb the impact from sharp trailer corners.
- Closed cell neoprene forms a wiper seal on the sides and top of trailers.
- Wear panels with guide stripes provide drivers with a visual reference to the dock.
- Tapered draft pads (8" to 2") located behind the side curtains help prevent air flow from lower corners of the shelter. Permanent "NO STEP" labels are included for safety.
- Heavy-duty steel supports provide support and protect each side frame.

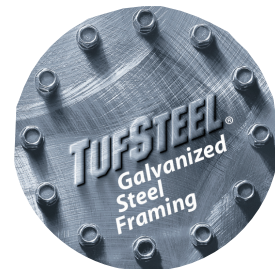


Project Information

Job Name _____
 Address _____
 General Contractor _____
 Distributor _____
 Quantity _____

Certified For Construction

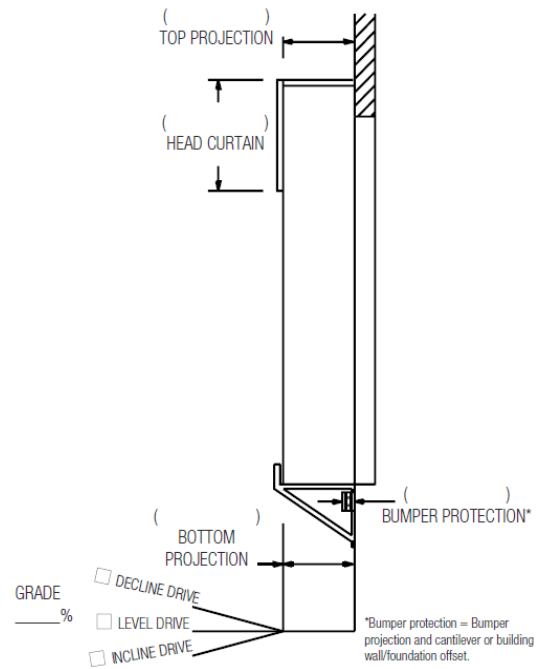
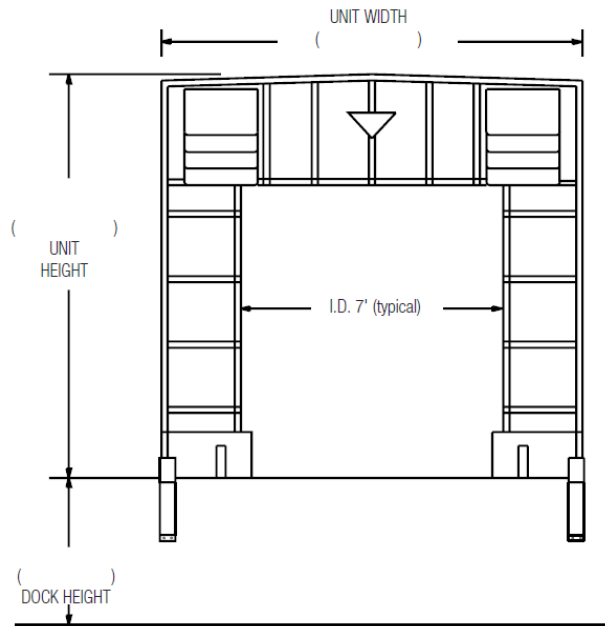
By _____
 Company _____
 Address _____
 Date _____



TS RIGID FRAME DOCK SHELTER



SPECIFICATIONS



APPLICATION DATA

Door Width: _____ ft. _____ in.
 Door Height: _____ ft. _____ in.
 Dock Height: _____ ft. _____ in.
 Bumper Protection*: _____ in.
 (*Includes bumper projection and any building wall/ foundation offset or cantilever)

TRUCKS AND TRAILERS SERVICED

Width: _____ Max. _____ Min.
 Height: _____ Max. _____ Min.
 Length: _____ Max. _____ Min.
 Hydraulic Tailgate: Yes No
 Rear Step Section: Yes No
 Tailgate/Step Section Size: _____ In.
 Yard Jockeys: Yes No

Quantity _____

Model TS-1000

Drive/Approach Level Incline Decline _____ % Grade

Frame Roll-Formed Galvanized Steel 1 1/4" Steel Tube

Building Wall Construction: Metal Other

Total Unit Width _____" Total Unit Height _____"

Material 22 oz. Vinyl 40 oz. Vinyl 40 oz. CSM TS-55®

Color Black Tan Brown Blue Green

Head Curtain Drop 30" 36" 42" 48" 54" _____"

Head Member Style Raked Flat Single Steel Tube

Taper Tapered Non-Tapered

Top Projection 24" 27" 30" 33" 36" 39" 42" 45" 48" 51" 54"

Bottom Projection 24" 30" 36" 42" 48" (For Projections over 48 Consult Factory)

Steel Supports 30" 36" 42" 48" 54"

Steel Support Extensions None _____" 6" 12" (Specify front channel or back extension)

Draft Pads None 24" 30" 36" 42" 48" 54"

Options None Door Numbers Full Length Guide Stripes Pull Rope Assembly

*Conversions: To convert measurements to metric, see formulas below:

Inches x 25.4 = millimeters (Example: 4" x 25.4 = 101.6 mm)

Feet x .3048 = meters (Example: 12' x .3048 = 3.66 m)